



OFFERS IN THE REGION OF

**£1,550,000**

**Pepys Road**

London, SE14 5SG

**GARETH  
JAMES**

## PROPERTY SUMMARY

A handsome Victorian semi-detached home offering generous proportions across four spacious levels, extending to approximately 2,290 sq ft. With four double bedrooms and a beautifully maintained west-facing garden, this is a home of both character and substance.

4



2



2









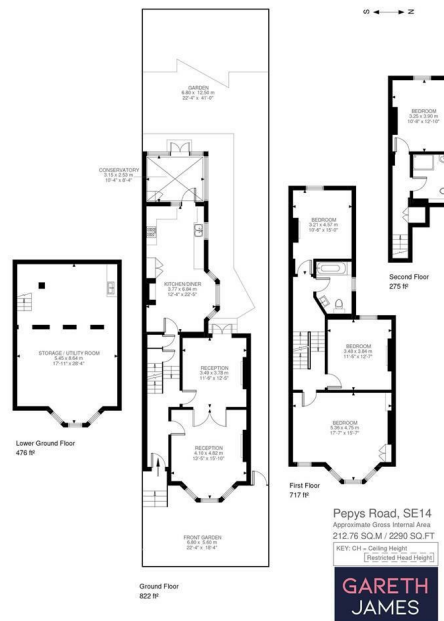
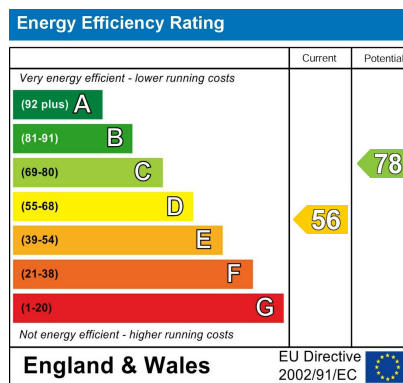


Illustration for identification purposes only. Not to scale.  
 Floor Plan Drawn According To RICS Guidelines.

4

2

2



Agents Note: Whilst every care has been taken to prepare these particulars, they are for guidance purposes only. All measurements are approximate and are for general guidance purposes only and whilst every care has been taken to ensure their accuracy, they should not be relied upon and potential buyers/tenants are advised to recheck the measurements

# GARETH JAMES

**OFFICE ADDRESS**  
 129 Bellenden Road  
 London  
 SE15 4QY

**OFFICE DETAILS**  
 02077324330  
 sales@garethjames.com  
<https://www.garethjames.com/>